

**RIVER DISTRICT**  
**TRANSFORMATIVE CLIMATE COMMUNITIES (TCC)**



# AGENDA

- I. Welcome and Introductions
  - Twin Rivers Resident Leaders
- II. Overview of Transformative Climate Communities (TCC)
- III. 2017 Lessons Learned
- IV. 2018 Guideline Changes
- V. Proposed Projects
- VI. Concept Ideas
- VII. Stakeholder Involvement Opportunities
- VIII. Next Meetings

# ABOUT TCC

## **What is the Transformative Climate Community grant?**

- funds community-led development and infrastructure projects that achieve major environmental, health, and economic benefits in California's most disadvantaged communities.
- California's Cap-and-Trade Program
- \$23M - \$33M available

## **What does it fund?**

### Project Types

- Affordable Housing
- Active Transportation
- Transit and Intercity Rail Capital
- Low Carbon Transportation
- Low-Income Weatherization
- Urban Greening
- Urban Forestry

# 2017 LESSONS LEARNED

## Issue

1. Community Engagement
2. Engagement beyond Twin Rivers
3. GHG Goal
4. Leverage

## Remedy

1. Resident leaders confirmed for each meeting
2. Meetings at Cannery Place aka Township 9
3. Resident and Small Business Survey
4. Social media – SHRA and Promise Zone
5. Website – Meeting info
6. Attending community meetings
7. Uploading past CE evidence
8. Partners – bring your peeps!
9. Flyers
10. Mega GHG Project



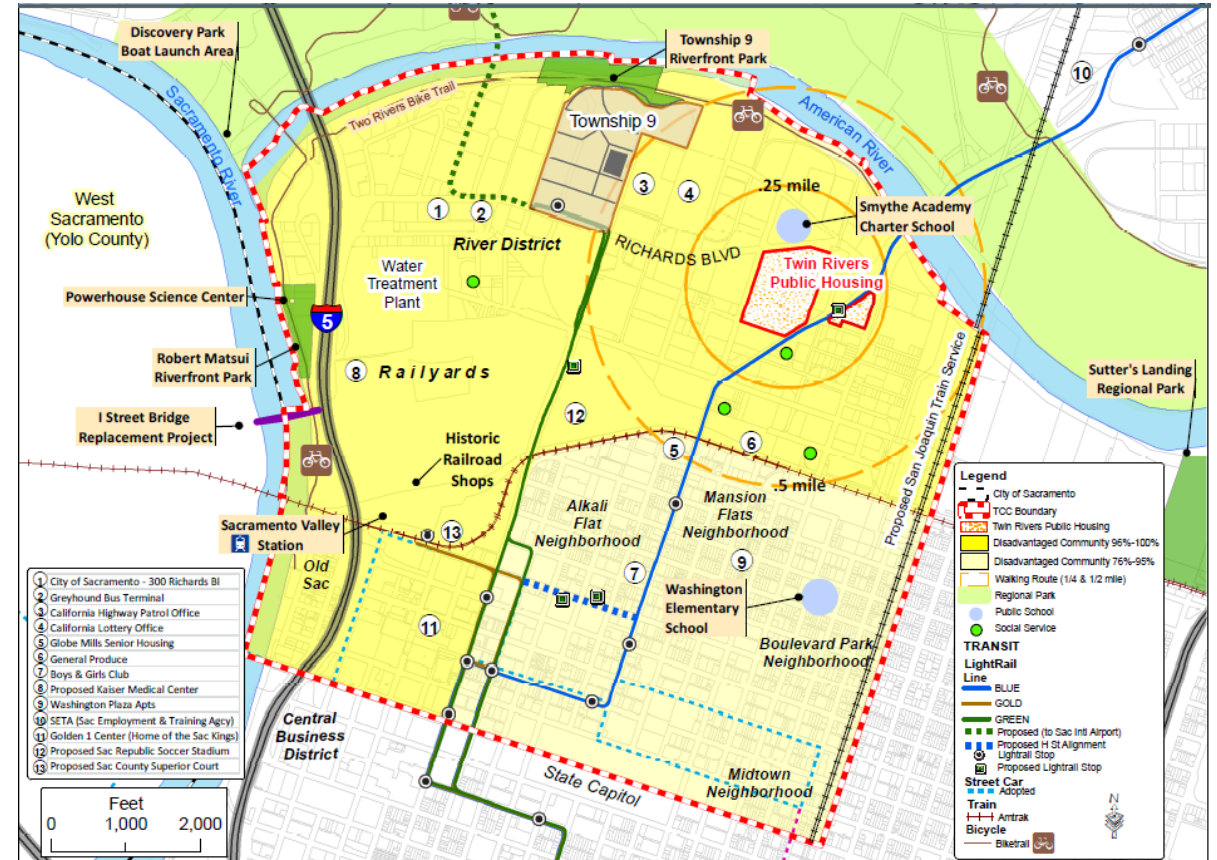
# 2018 GUIDELINE CHANGES

- Funding - \$23M - \$33M
- 5 year project completion deadline
- 8% Community Engagement Budget
- Process is more streamlined
- Project Requirements
  - 3 projects must comprise 50% of funding request
  - be quantifiable
  - meet readiness requirements

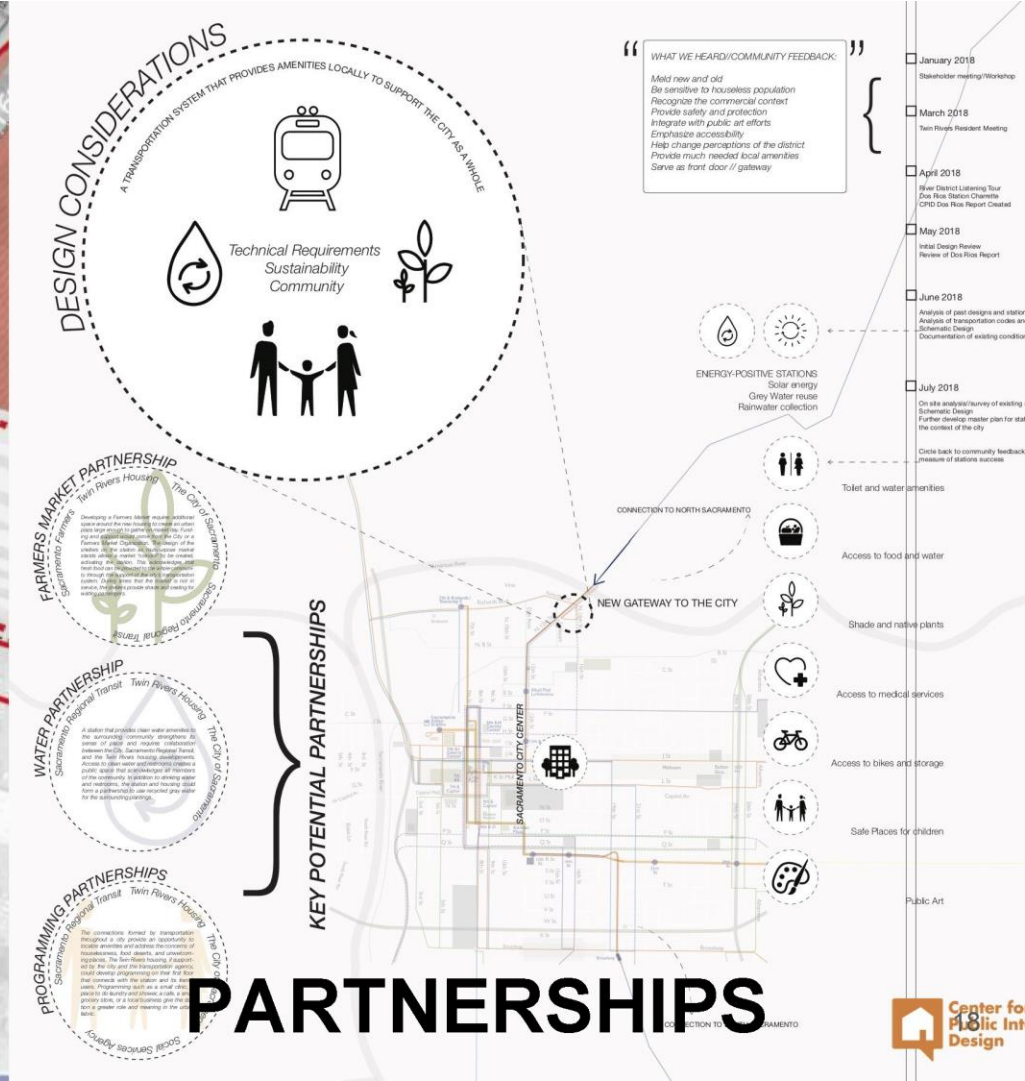
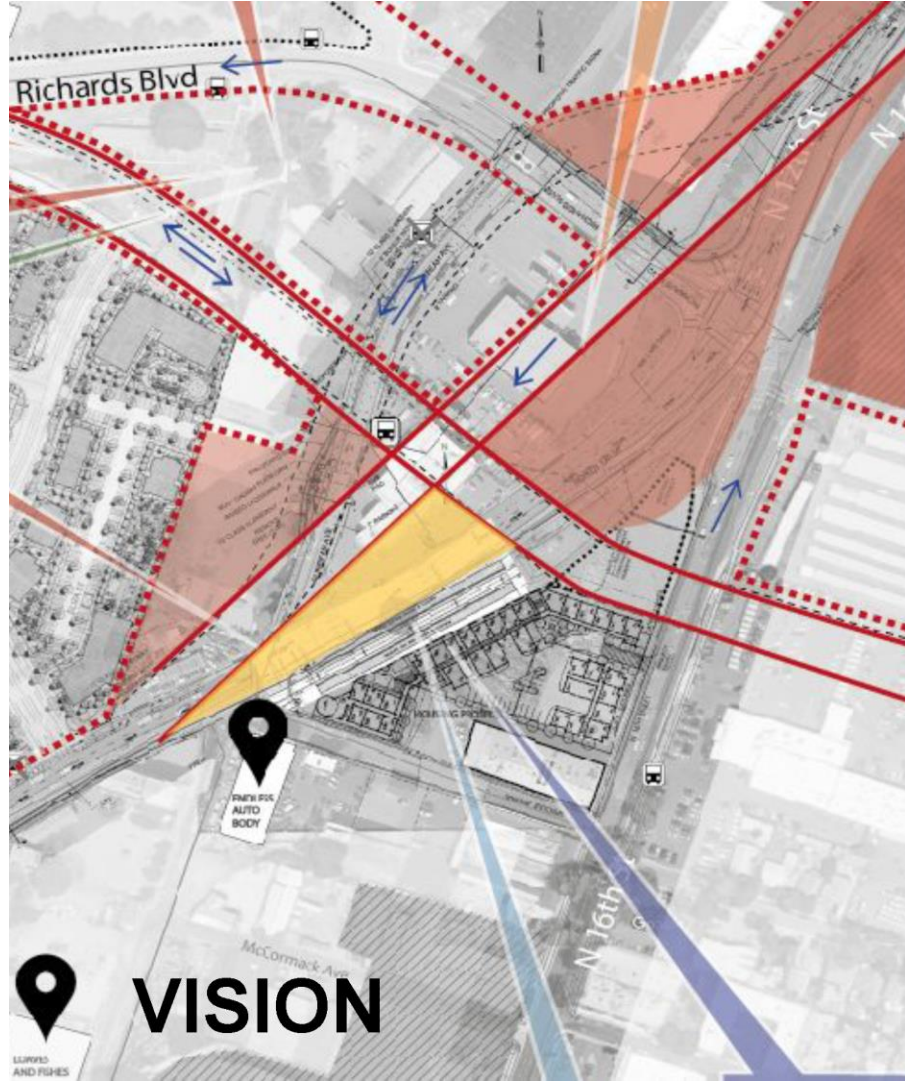
# PROPOSED RIVER DISTRICT PROJECTS

- New Dios Rios Light Rail Station
- Twin River Public Housing – Mixed use and mixed income
- Active Transportation - Bike paths, pedestrian walk ways
- Urban Greening – new park, more trees, storm water retention basins
- Food Access – community garden
- Plan to address supporting small businesses and residents

Key Partners: Sacramento Housing and Redevelopment Agency (SHRA) , City of Sacramento, Sacramento Regional Transit, McCormack, Baron, and Salazar, and other committed community partners **and YOU!**

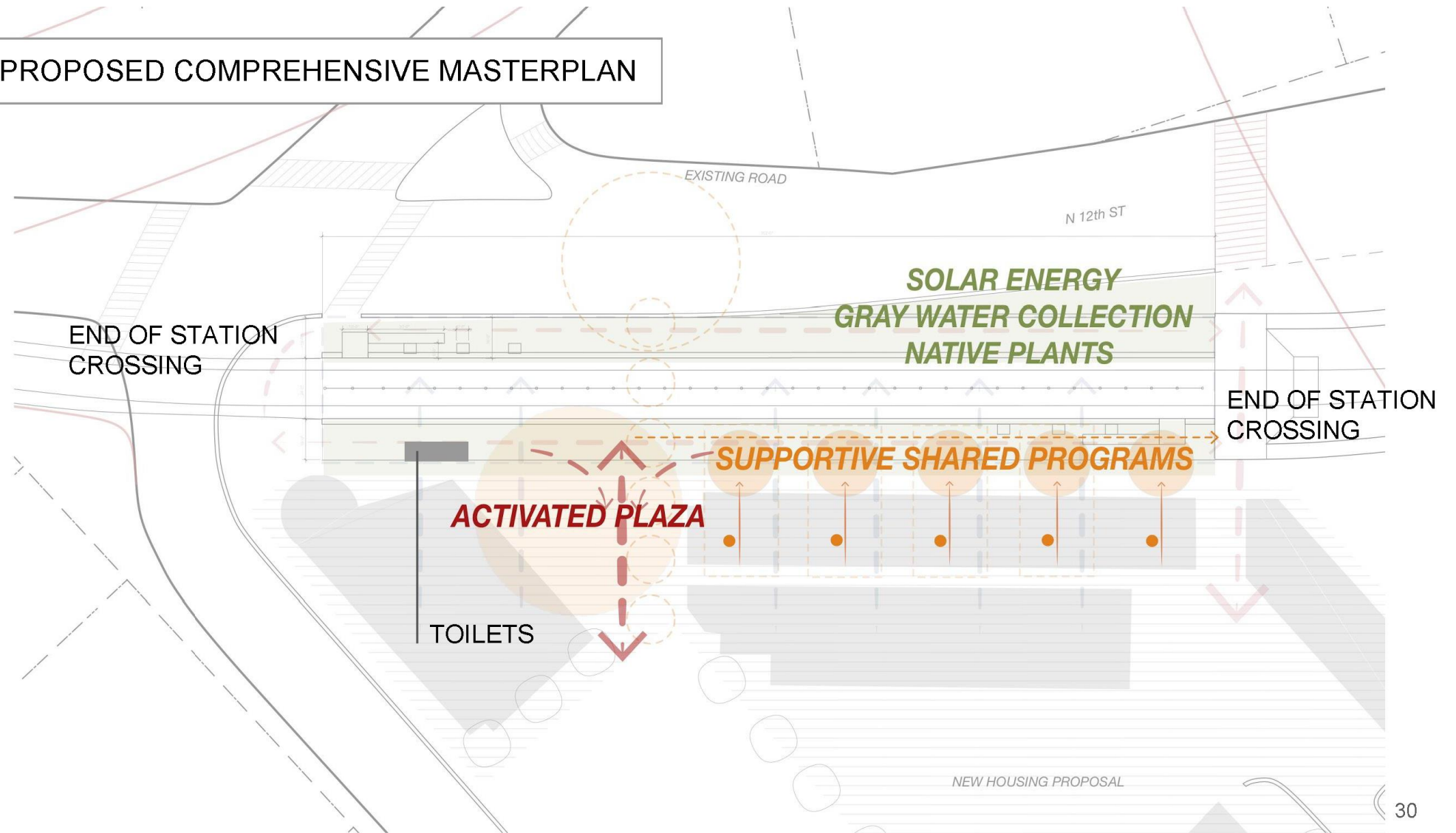


# DOS RIOS STATION SCHEMATIC DESIGN AND RESEARCH



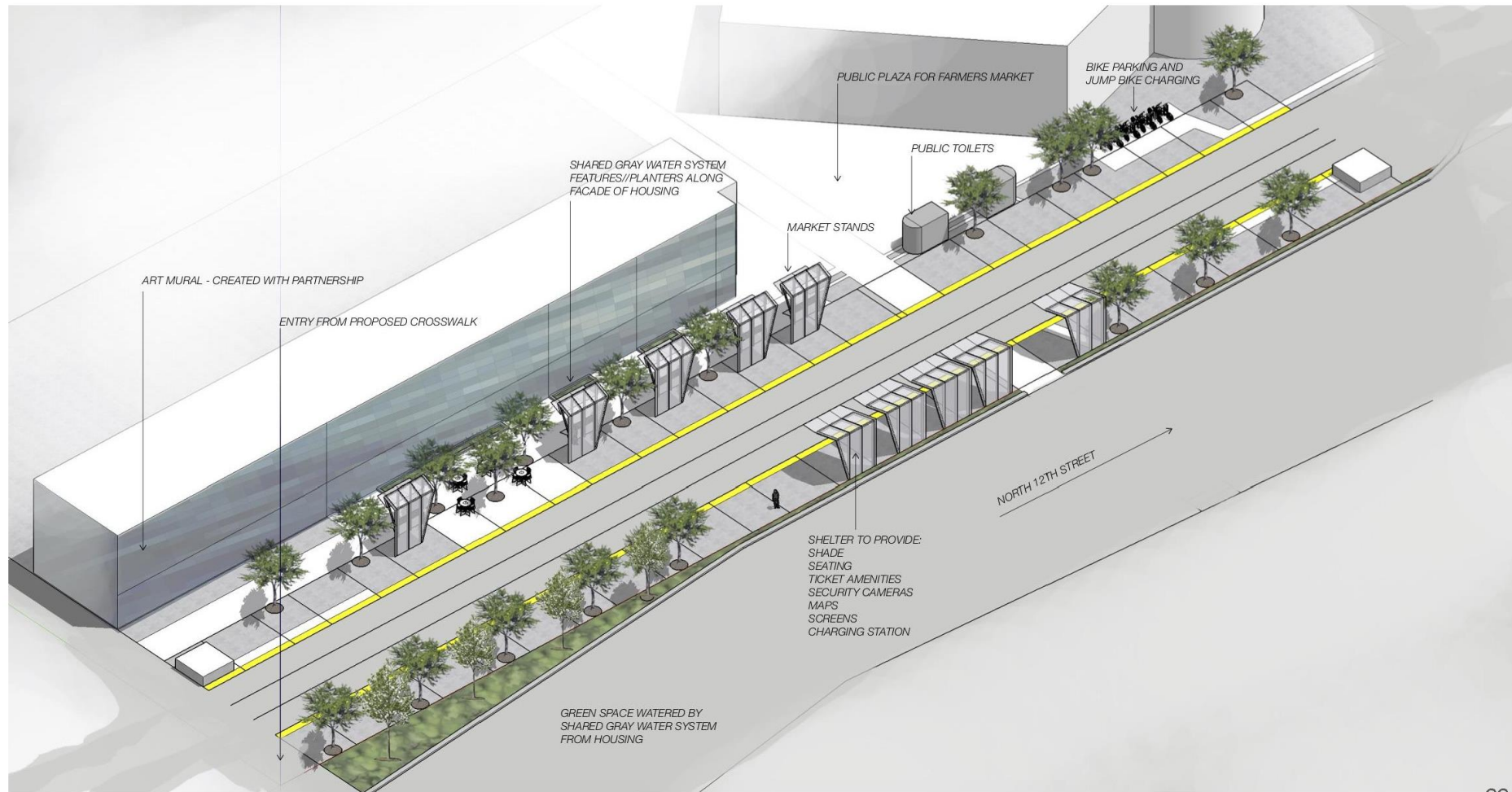


# PROPOSED COMPREHENSIVE MASTERPLAN



# **FOLDED PAVILIONS**

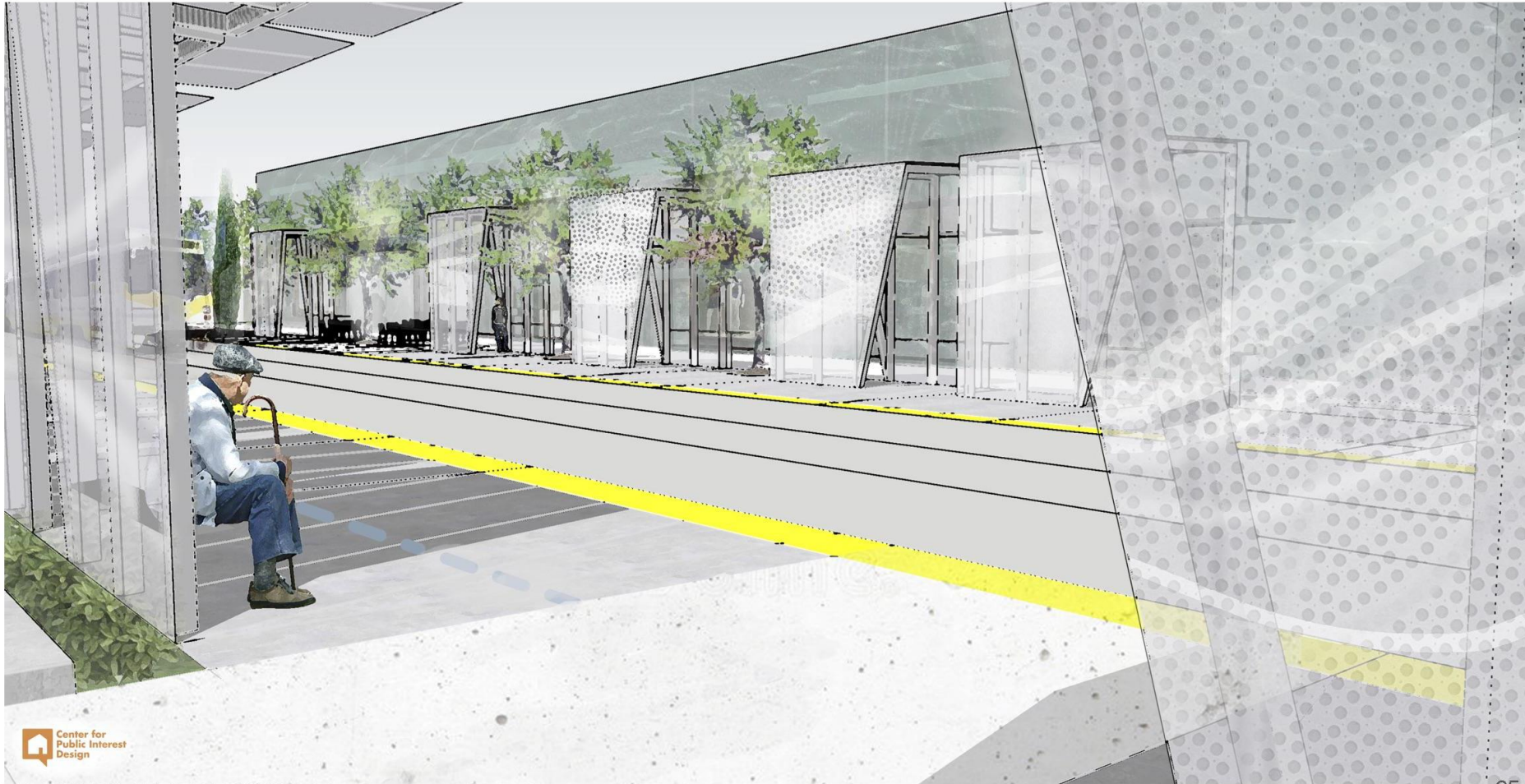
AN ENHANCED TRAIN STATION  
FOR THE DOS RIOS COMMUNITY



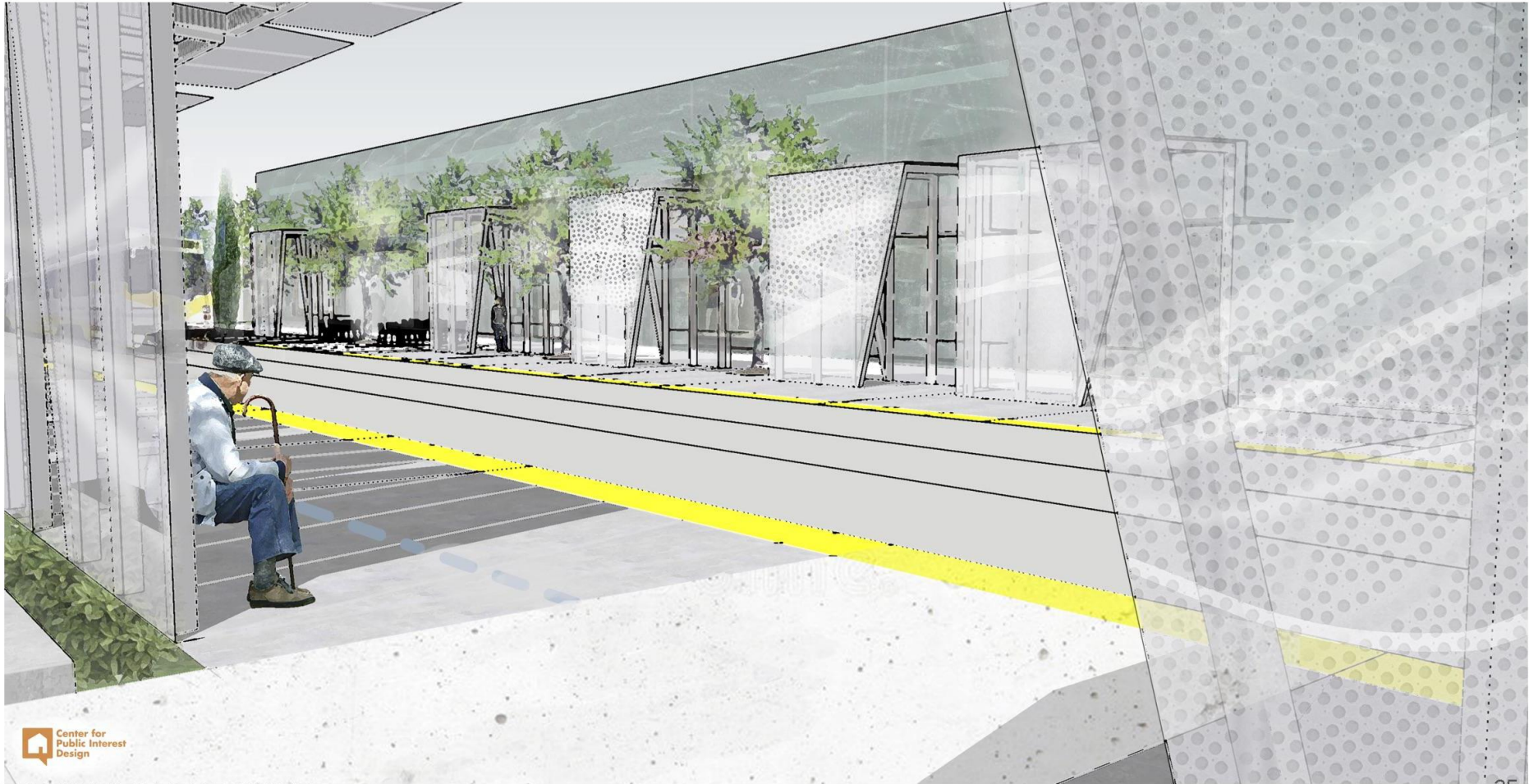
## PAVILION PROPOSAL







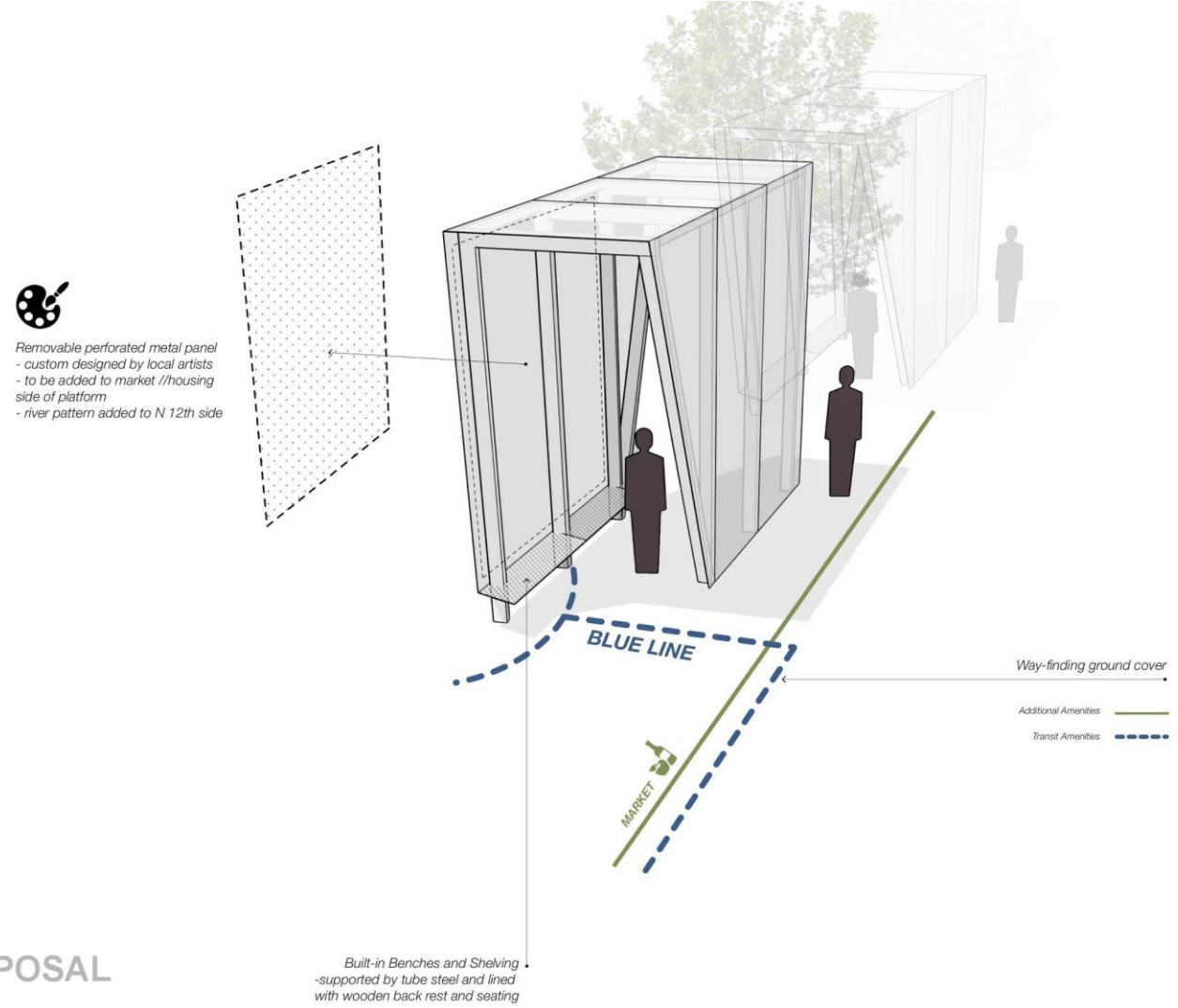
## PAVILION PROPOSAL

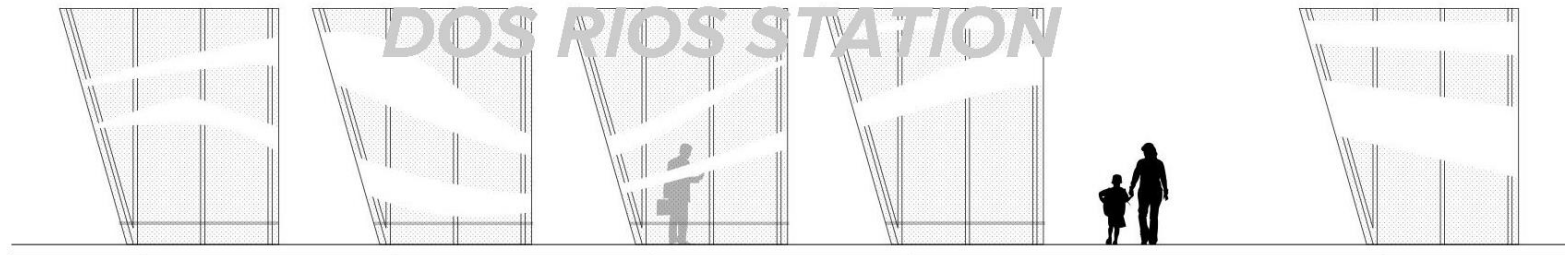


PAVILION PROPOSAL

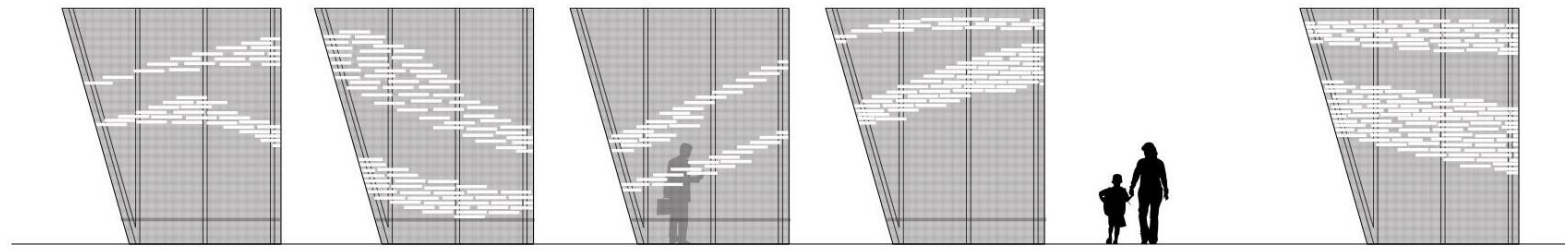


PAVILION PROPOSAL





Iteration 1

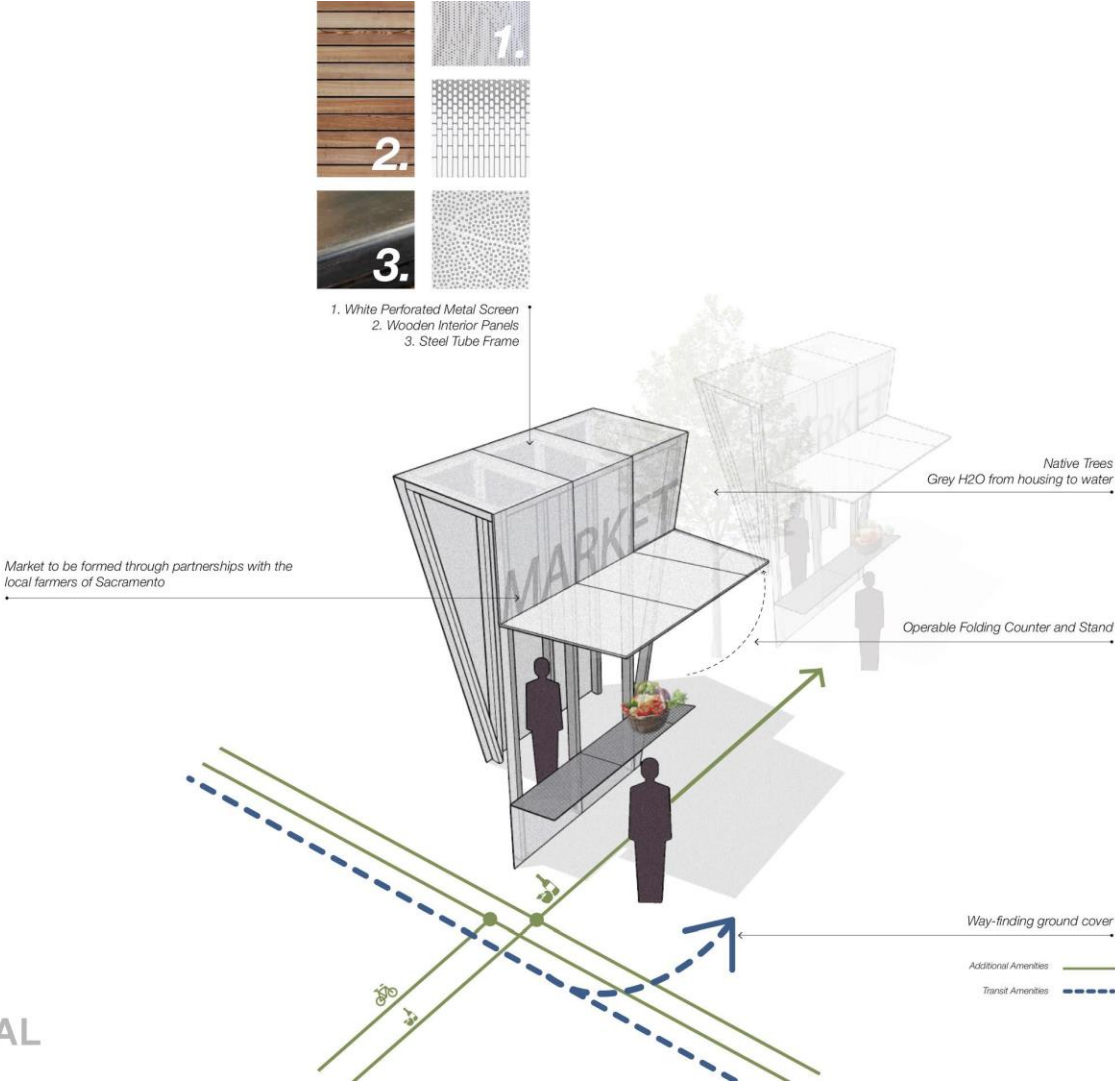


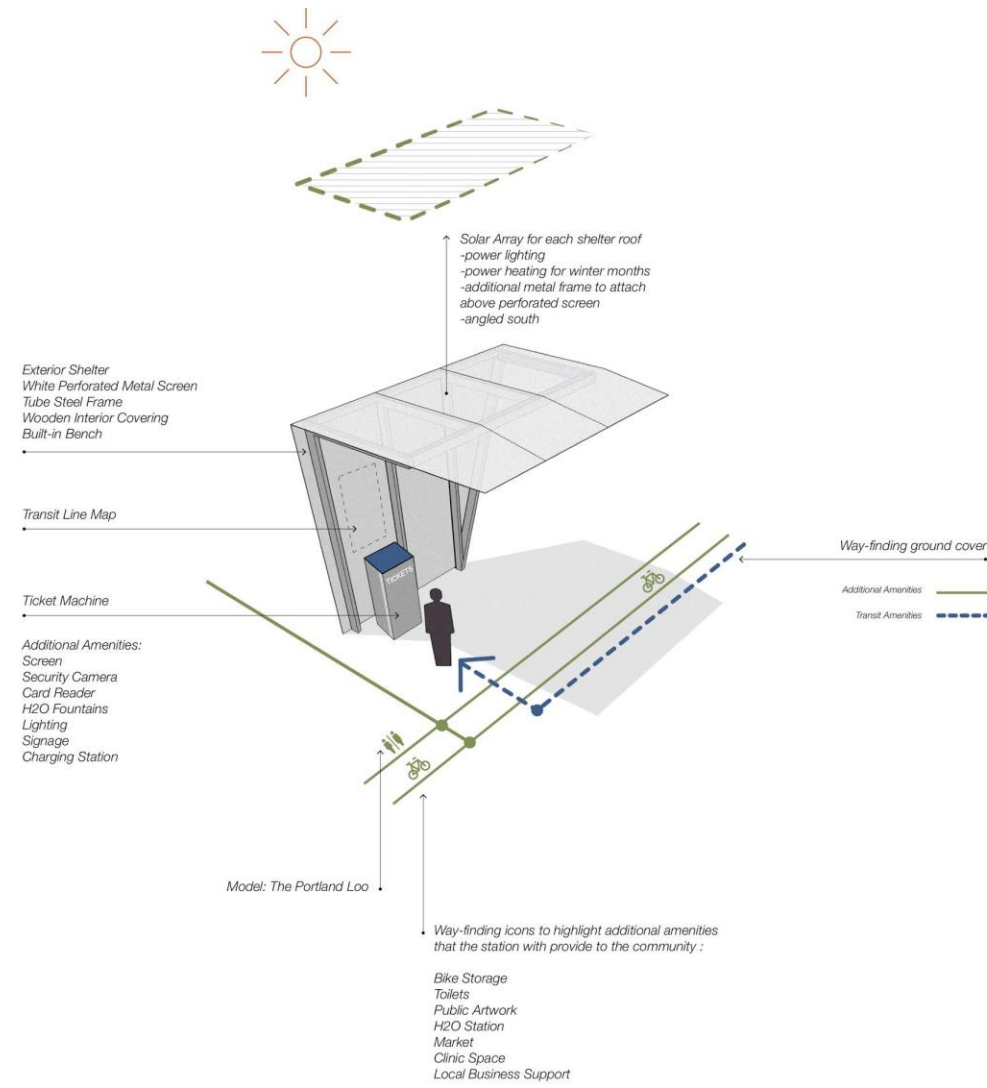
Iteration 2



## PAVILION PROPOSAL

PAVILION PROPOSAL

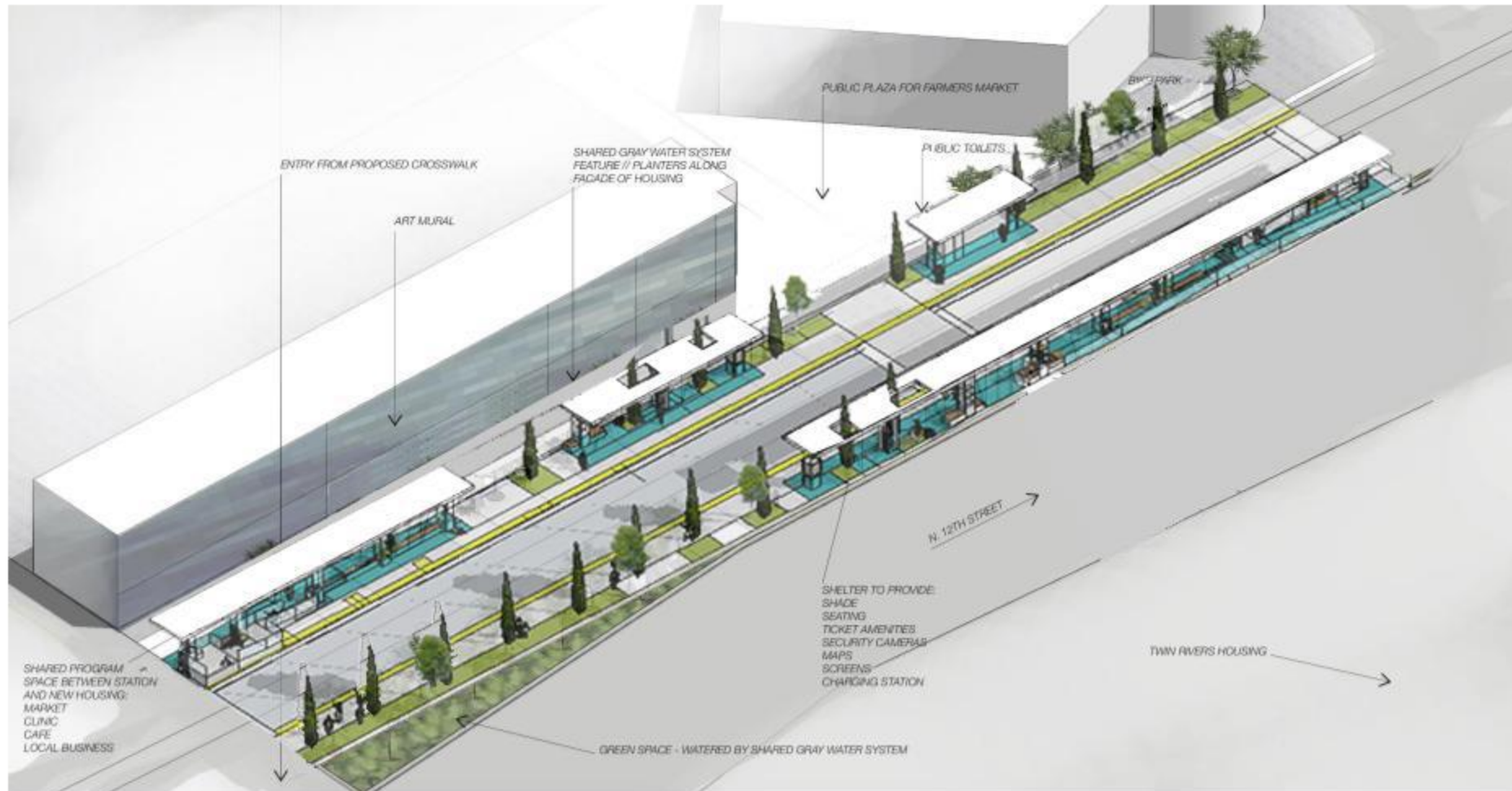




## PAVILION PROPOSAL

# RIO AZUL

AN ENHANCED TRAIN STATION  
FOR THE DOS RIOS COMMUNITY



RIO AZUL PROPOSAL





RIO AZUL PROPOSAL





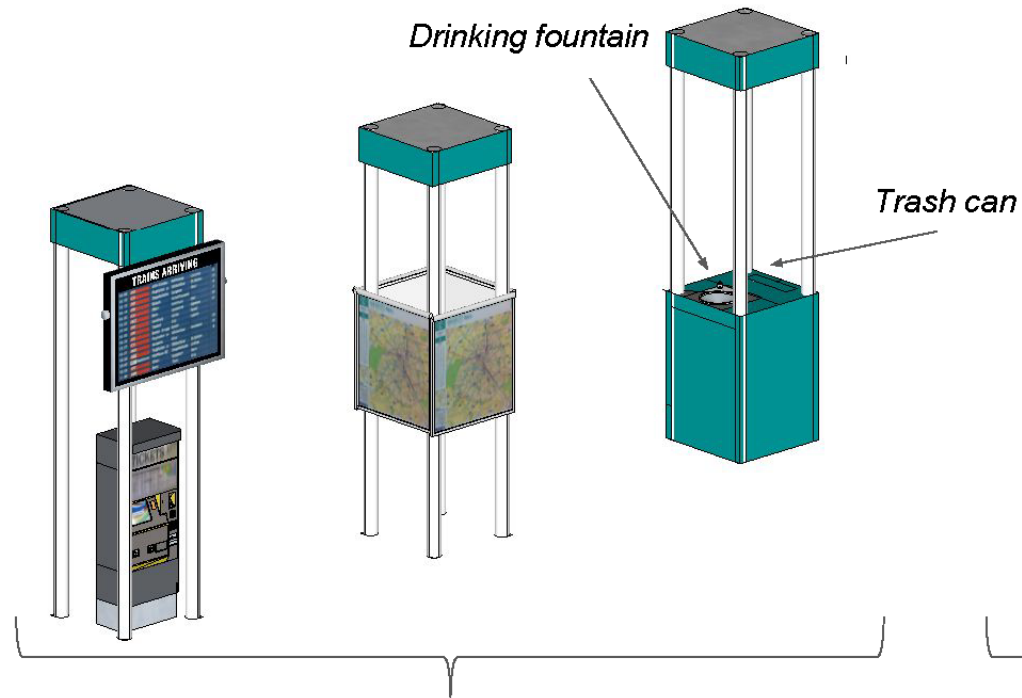
RIO AZUL PROPOSAL





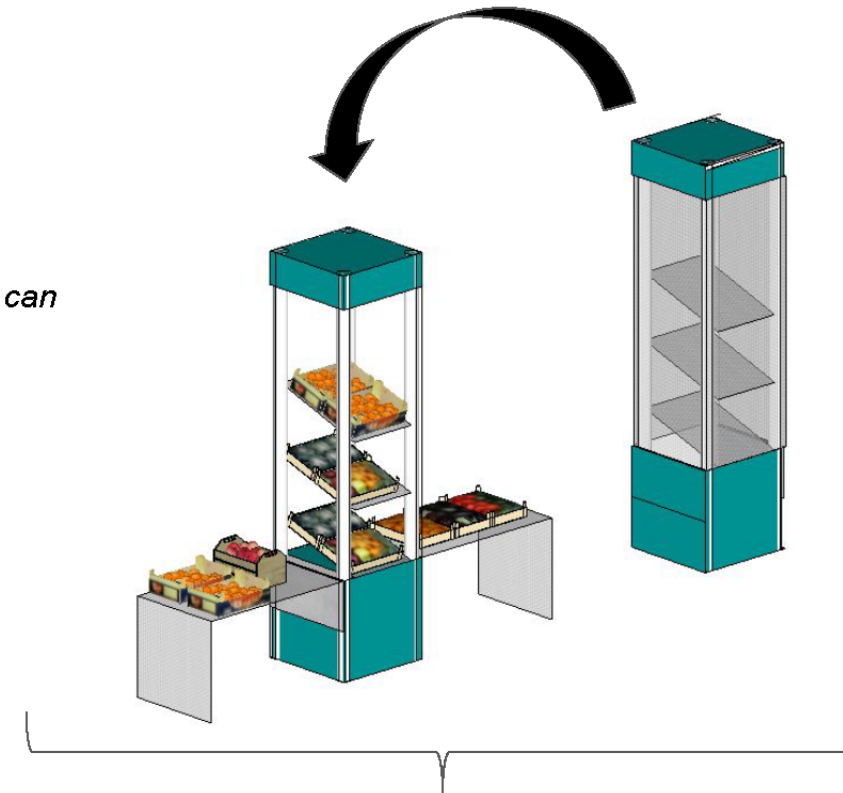
RIO AZUL PROPOSAL

## COLUMNS AS CONTAINER FOR AMENITIES



**COLUMNS A AND B: TRANSIT AMENITIES**

RIO AZUL PROPOSAL



**COLUMN C: COMMUNITY AMENITIES**

(e.g. Farmer Market)

... 3,000 SQUARE FEET of **SOLAR ENERGY PRODUCTION!**



320 watts/panel



170 PANELS

170 PANELS  
X  
428 kWh a year  
=

APPROXIMATELY  
**72,000 kWh**  
OF SOLAR ENERGY  
PER YEAR

(like 9 American Houses)

**DIRECT USE**

- Station standard facilities
- Station extra-facilities
- Housing facilities

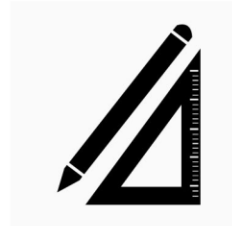
**STORED**  
Through use of  
batteries

**BACK TO  
THE CITY  
ENERGY GRID  
SYSTEM**

RIO AZUL PROPOSAL

# GUIDING PRINCIPLES:

WE FOCUSED ON



**COMMUNITY NEEDS**, **TECHNICAL FUNCTIONALITY** & **SUSTAINABILITY**

WHILE

PREPARING FOR TRANSITION AND

SUPPORTING THE CHANGING SCENARIO OF COMMUNITY NEEDS...



...BY DESIGNING  
**A NEW SUSTAINABLE MODEL OF TRANSIT**  
ROOTED INTO COMMUNITY AND POTENTIAL PARTNERSHIPS



Center for  
Public Interest  
Design





# CITY OF SACRAMENTO RIVER DISTRICT PROJECTS

Rachel Hazlewood

Senior Project Manager

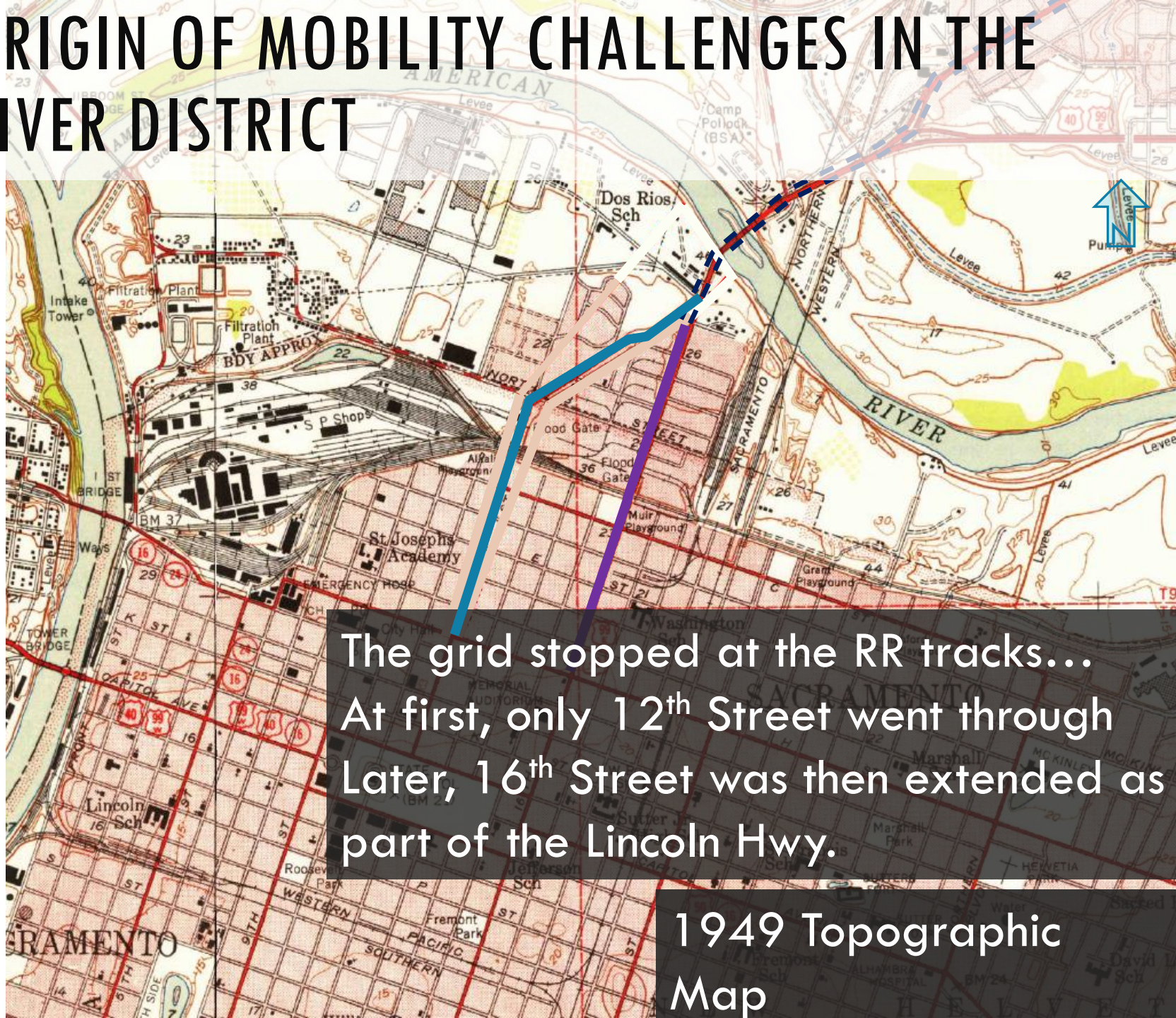
Innovation and Economic Development

(916) 808-8645

[rhazlewood@cityofsacramento.org](mailto:rhazlewood@cityofsacramento.org)



# ORIGIN OF MOBILITY CHALLENGES IN THE RIVER DISTRICT

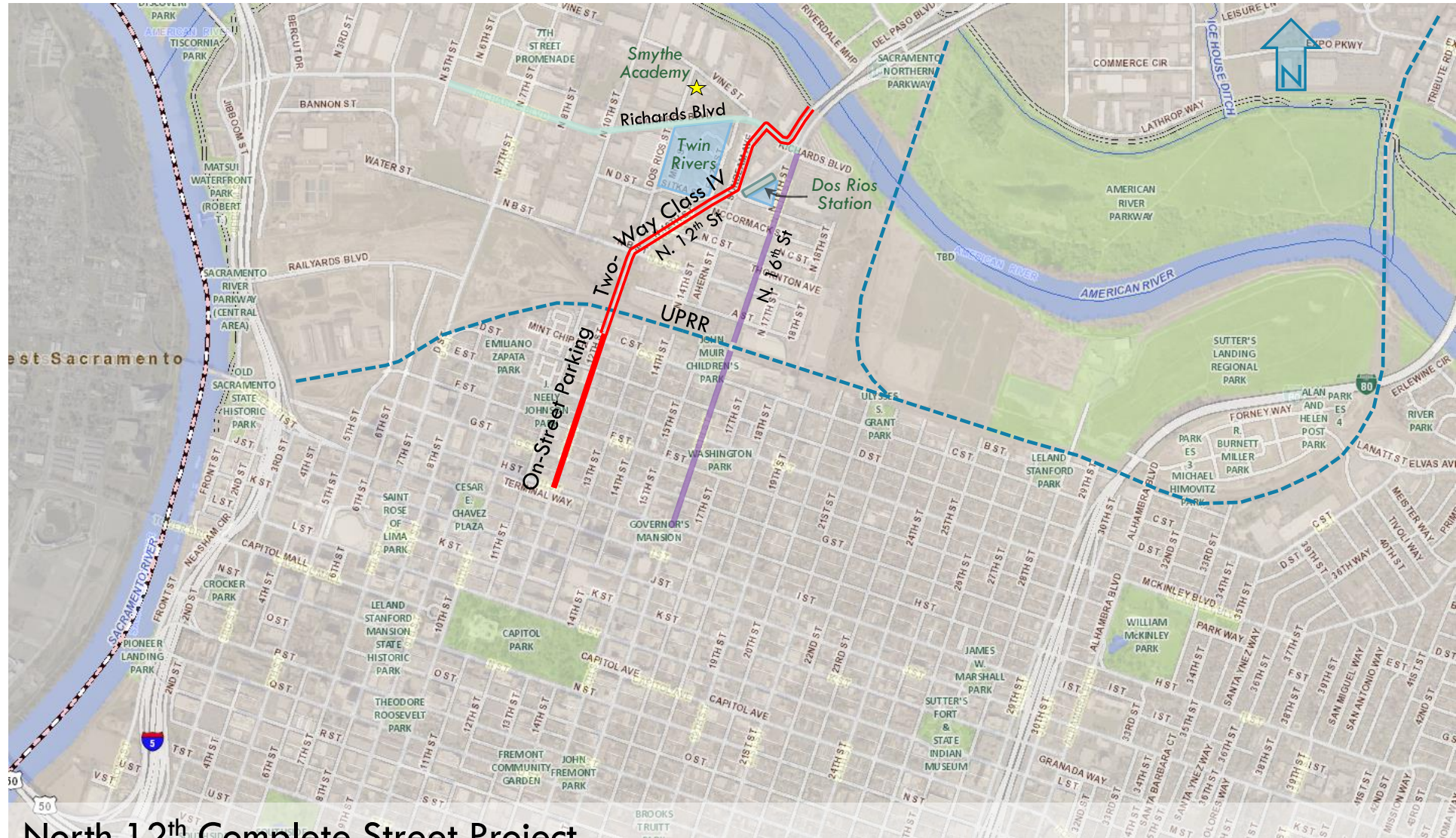


The grid stopped at the RR tracks...  
At first, only 12<sup>th</sup> Street went through  
Later, 16<sup>th</sup> Street was then extended as  
part of the Lincoln Hwy.

1949 Topographic  
Map



# CITY PROJECTS OVERVIEW



## North 12<sup>th</sup> Complete Street Project

- Reduce vehicle lanes on 12<sup>th</sup> Street/North 12<sup>th</sup> Street from 4 to 3
- Install two-way bikeway from C Street to Richards Blvd



# NORTH 12<sup>TH</sup> COMPLETE STREET



Existing North 12<sup>th</sup> Street (looking north)



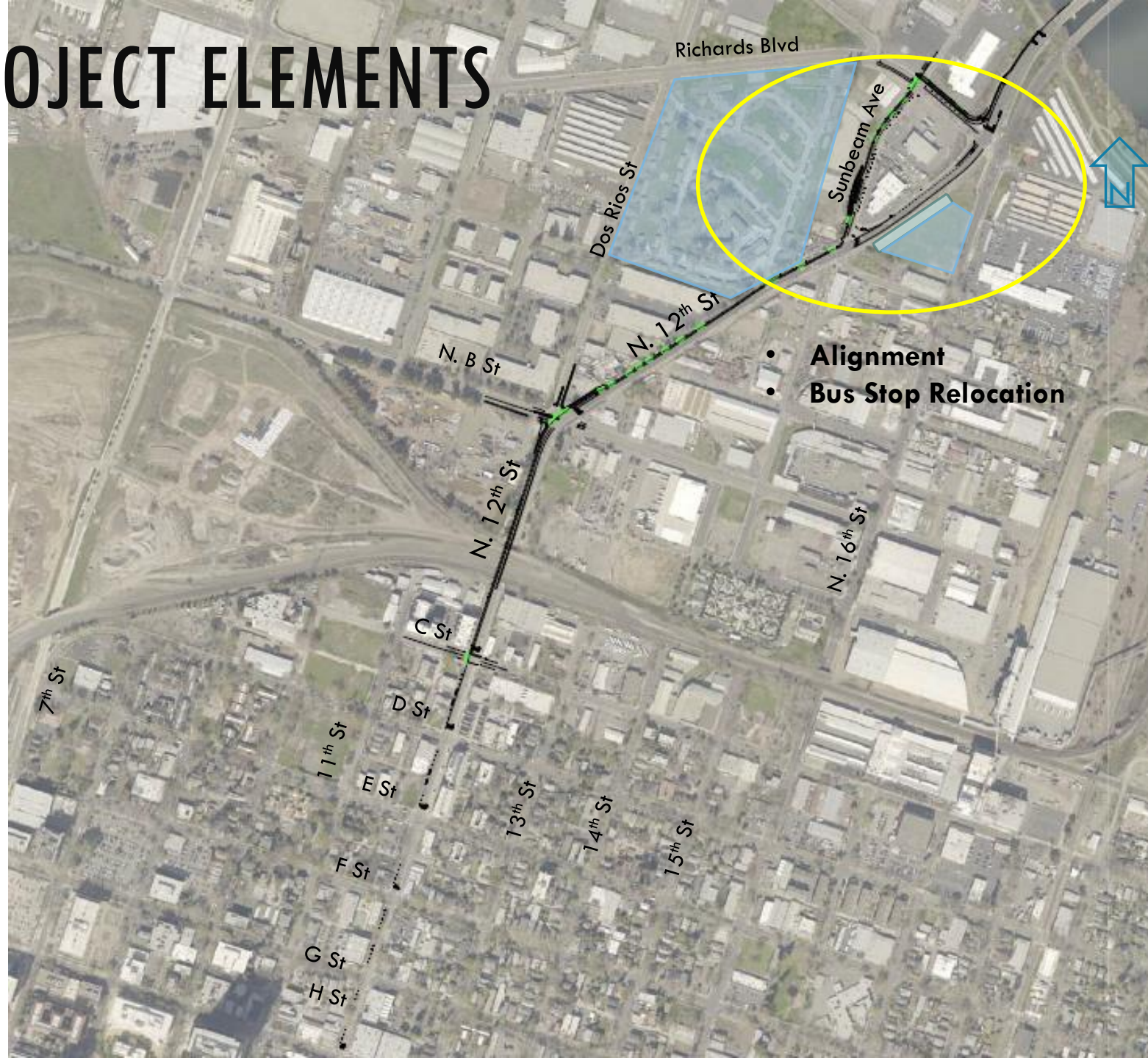
# NORTH 12<sup>TH</sup> COMPLETE STREET



Proposed Two-Way Class IV Bikeway



# PROJECT ELEMENTS



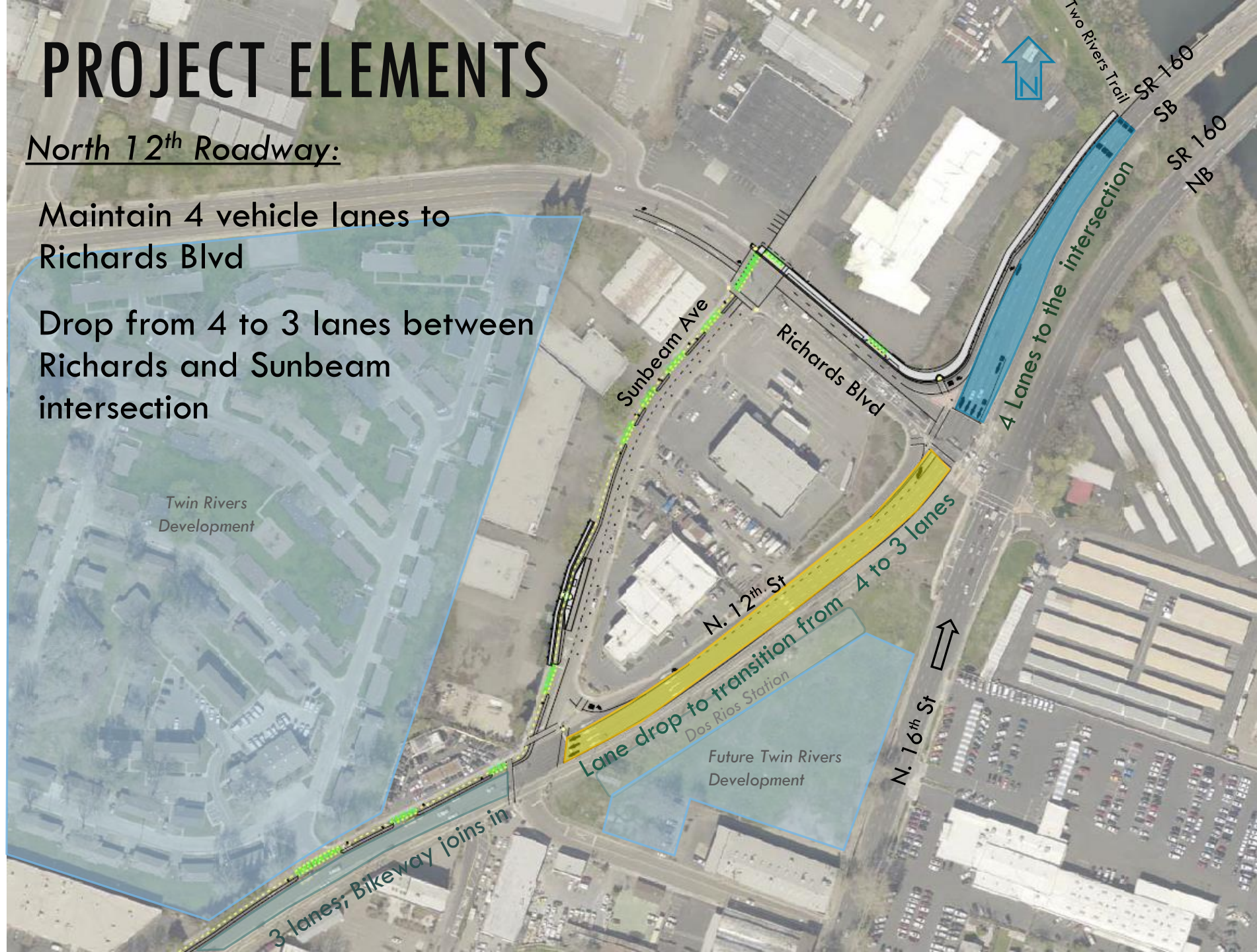


# PROJECT ELEMENTS

## North 12<sup>th</sup> Roadway:

Maintain 4 vehicle lanes to Richards Blvd

Drop from 4 to 3 lanes between Richards and Sunbeam intersection

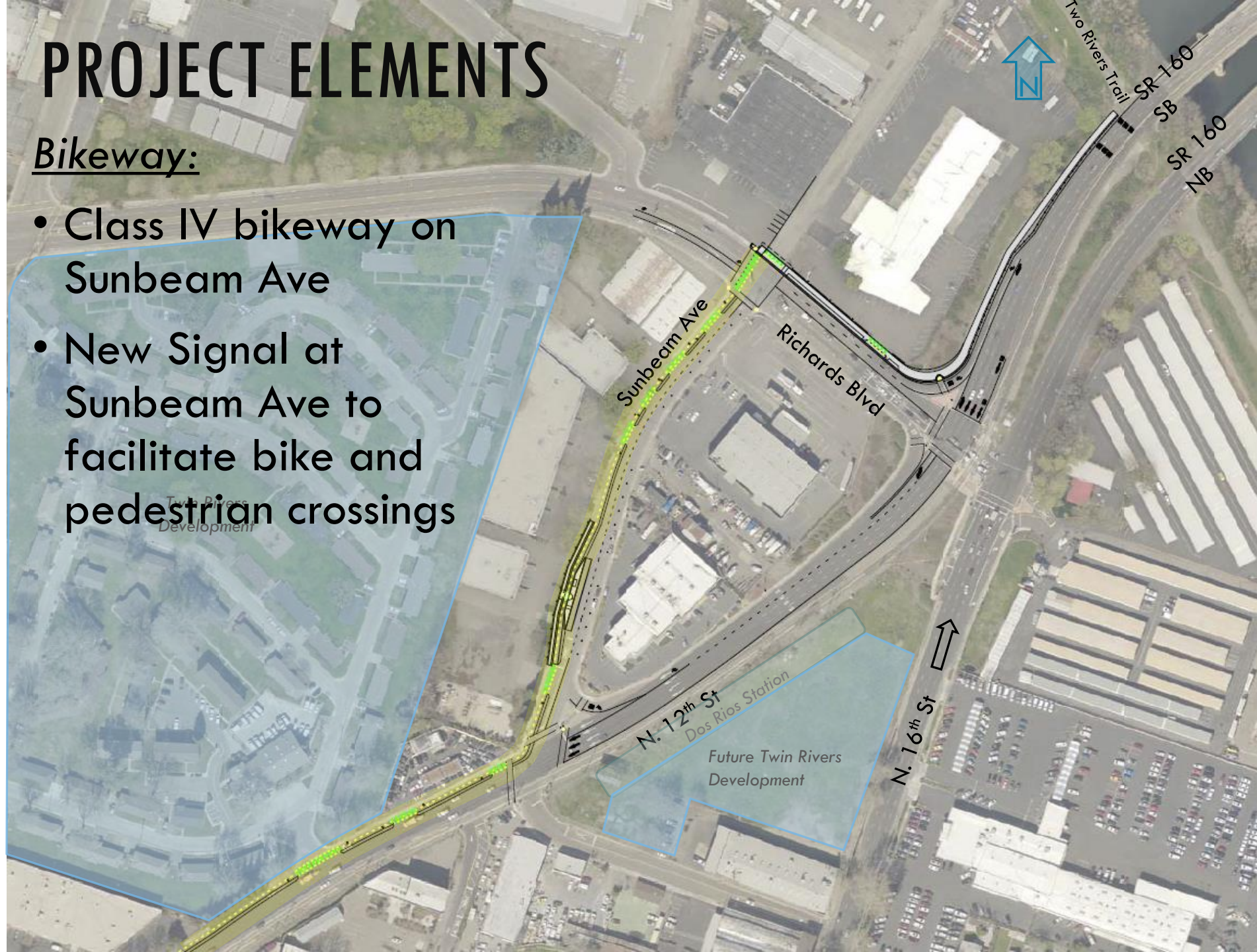




# PROJECT ELEMENTS

## Bikeway:

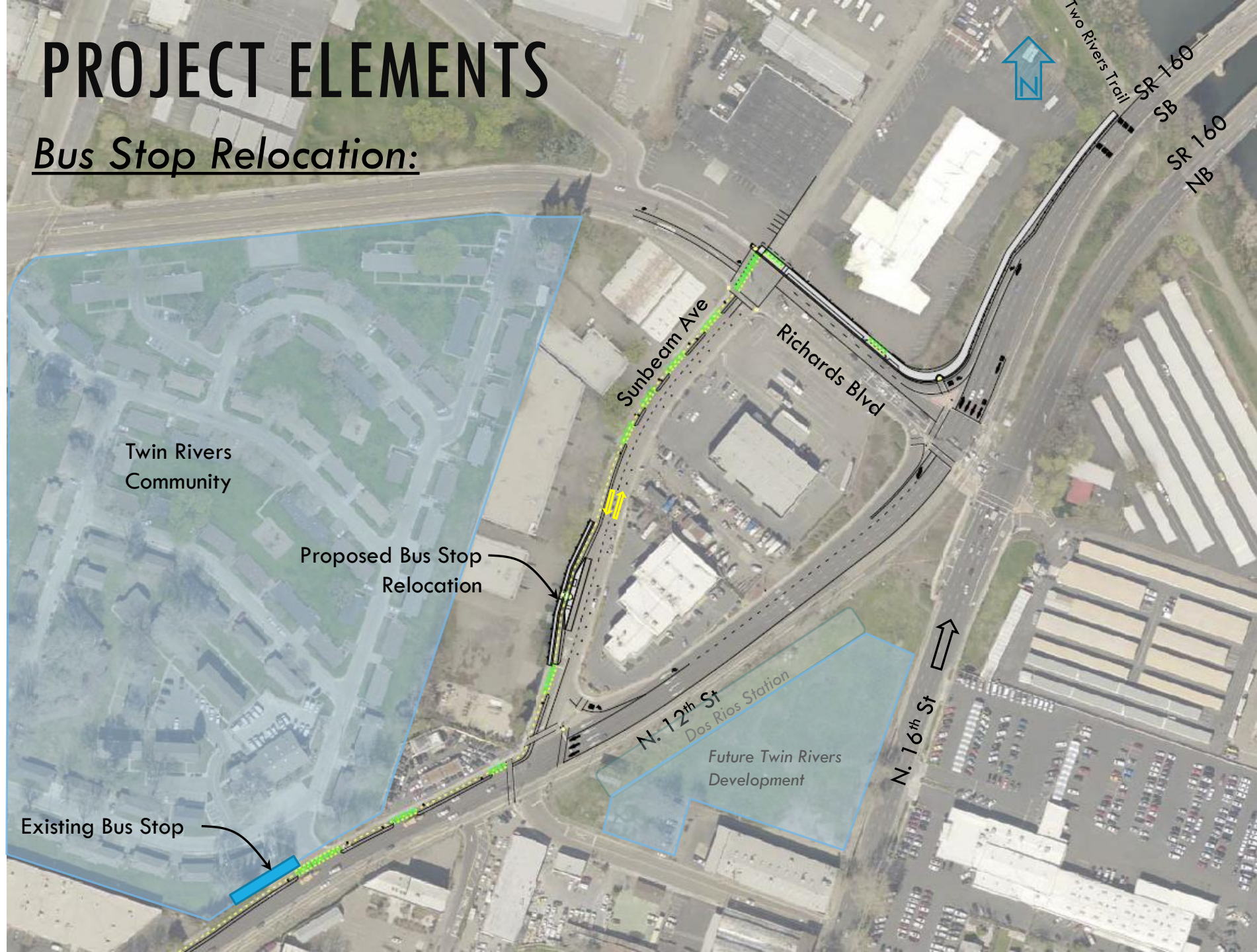
- Class IV bikeway on Sunbeam Ave
- New Signal at Sunbeam Ave to facilitate bike and pedestrian crossings





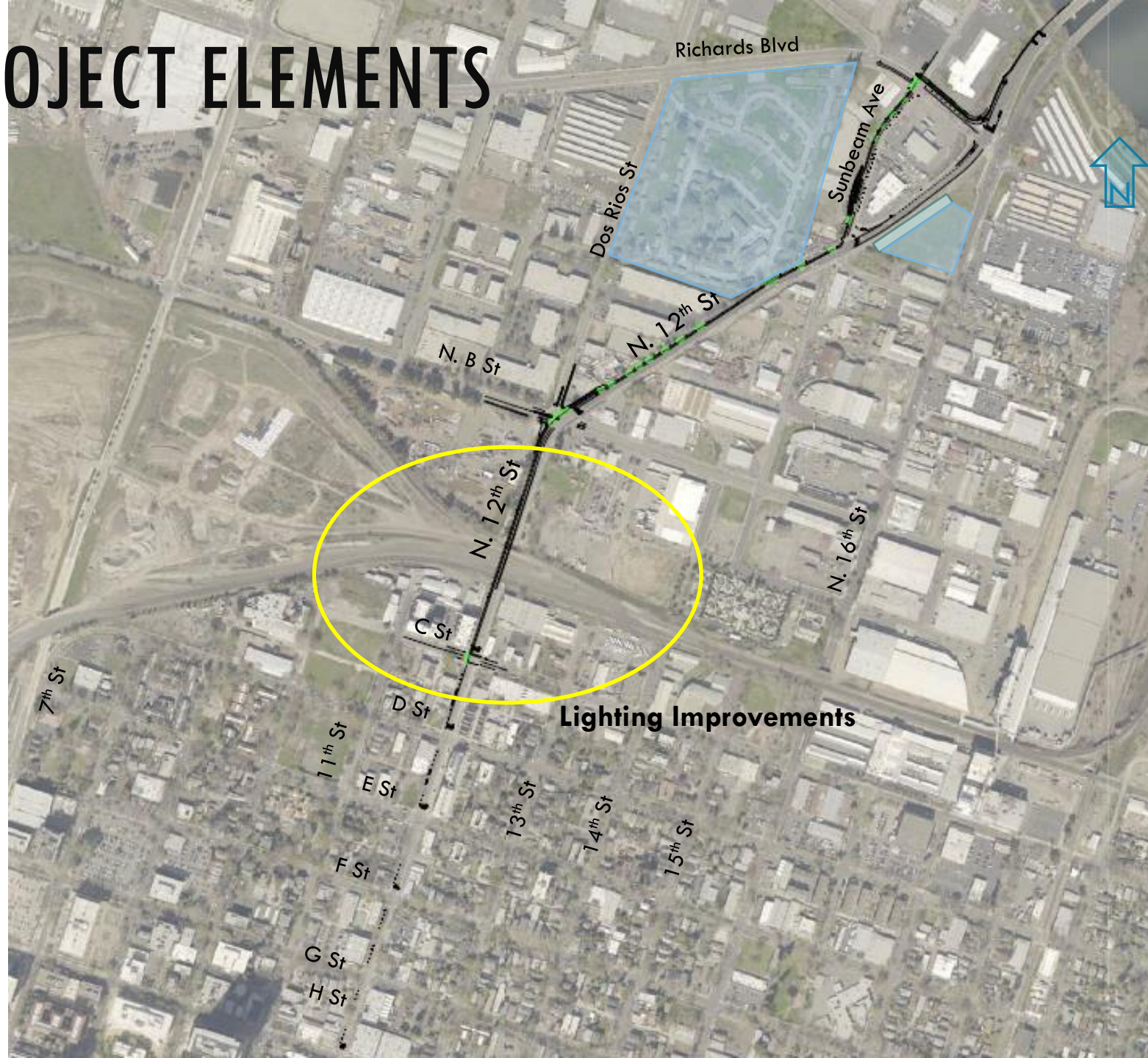
# PROJECT ELEMENTS

## Bus Stop Relocation:





# PROJECT ELEMENTS





Existing UPRR underpass lighting (looking south)

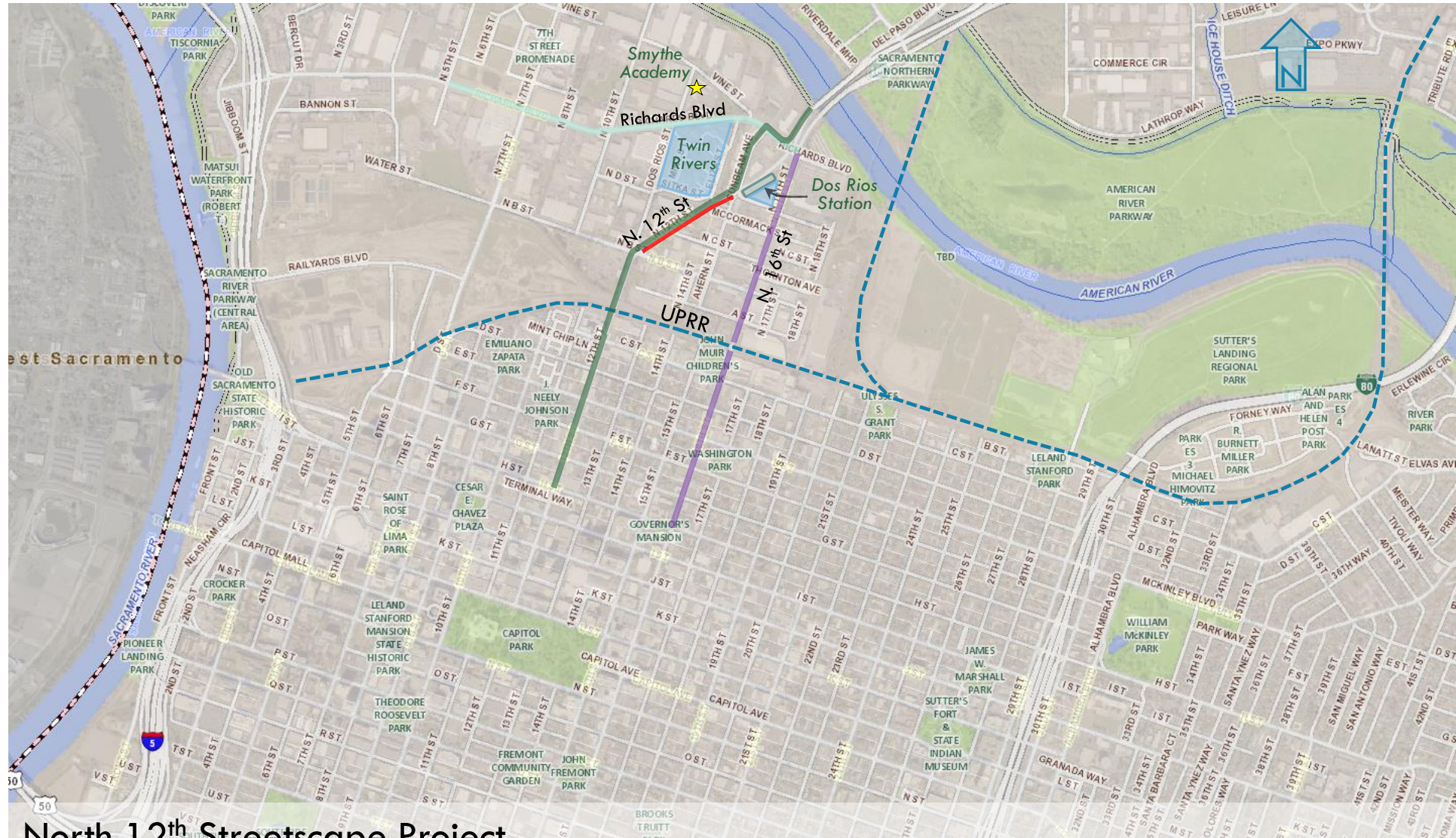




Proposed UPRR underpass lighting (looking south)



# CITY PROJECTS OVERVIEW



## North 12<sup>th</sup> Streetscape Project

- Install Sidewalk on east side of street, from North B Street to Sproule Ave



# NORTH 12<sup>TH</sup> STREETSCAPE



Existing Condition — East side of street



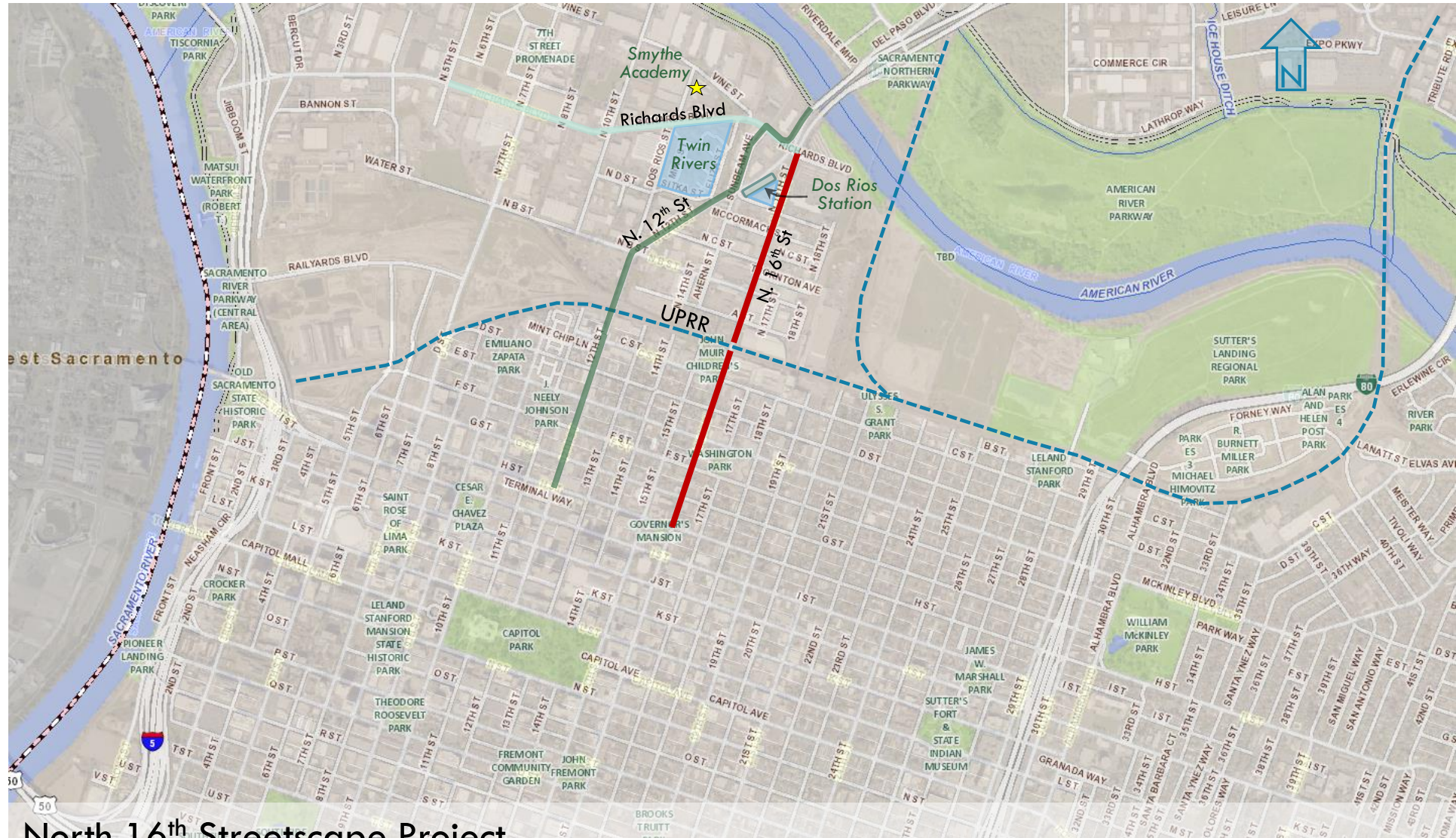
# NORTH 12<sup>TH</sup> STREETSCAPE



Proposed Sidewalk — East side of street



# CITY PROJECTS OVERVIEW



## North 16<sup>th</sup> Streetscape Project

- Pedestrian improvements – trees, landscaping, curb, sidewalk, lighting
- Improved bicycle access beneath railroad



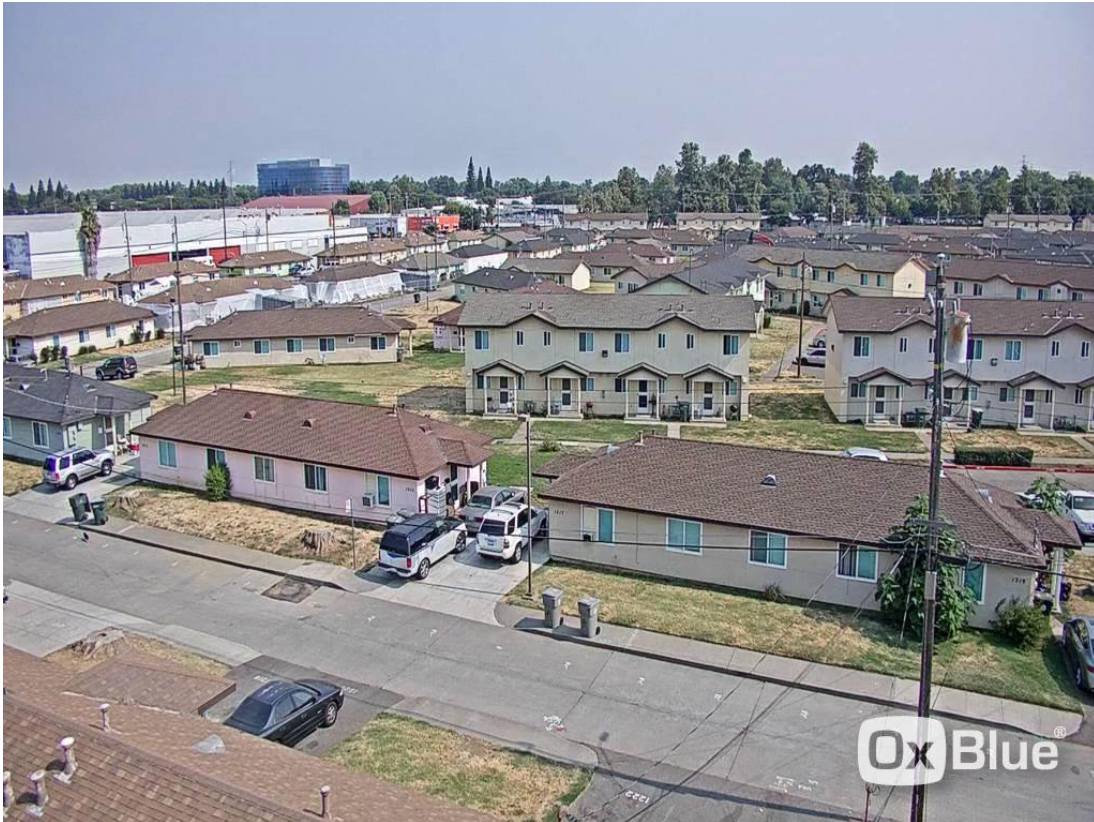
# NORTH 16<sup>TH</sup> STREETSCAPE





# TWIN RIVERS HOUSING

Demolition Time Lapse



Demolition Drone - Aerial View





PHASE 2

PROPERTY LINE, TYP.

 VACANT AS OF  
SEPT. 7, 2018

 OCCUPIED AS OF  
SEPT. 7, 2018

 LAUNDRY UNIT



**AERIAL VIEW FROM NORTHWEST**





**AERIAL VIEW FROM SOUTHEAST**



Right Elevation  
1/8" = 1'-0"



Front Elevation  
(Street Facing)  
1/8" = 1'-0"



Left Elevation  
1/8" = 1'-0"



Rear Elevation  
(Faces Parking Lot)  
1/8" = 1'-0"



# CONCEPT IDEAS

Health and Wellness – Access to Food

Food Factory – Andrea Lepore



# HOW YOU CAN HELP

## Get Involved!

- Complete resident and small business survey (also available online)
- Let us know about any activities to share info
- Invite us to speak at your events
- Attend Resident & Stakeholder meetings
- Participate in sub-committees (Health + Workforce Development)
- Follow us and share information on social media ([@sacpromisezone](#))
  - #TCC #CommunityLedTransformation @CalSGC @CAClimatInvest
- Visit <https://www.sacramentopromisezone.org/rdtp>



# RESIDENT & STAKEHOLDER MEETINGS

*\*Meetings are held from*

*1:00 - 2:30 p.m.*

*Cannery Place/Township 9*

*“Great Room”*

*601 Cannery Ave.*

*Sacramento, California 95811*

Thursday, September 20\*

Thursday, September 27\*

Thursday, October 4\*

Thursday, October 11\*

Thursday, October 18\*

Thursday, October 25\*

# SPEAKER INFORMATION

Rachel Hazlewood  
Senior Project Manager  
Innovation and Economic Development

(916) 808-8645

[rhazlewood@cityofsacramento.org](mailto:rhazlewood@cityofsacramento.org)

TCC Coordination - Jo Anna Davis (916) 440-1309/[jdavis@shra.org](mailto:jdavis@shra.org)



# TRANSFORMATIVE CLIMATE COMMUNITY (TCC) MEETING NOTES

*Sacramento Housing and Redevelopment Agency (SHRA)  
Commission Room, 2nd floor  
Friday, September 14, 2018, 2:30-4pm*

## **Jo Anna Davis, SHRA**

Overview of TCC grant

- 2<sup>nd</sup> year
- Project deadline has changed to 5 years, not 3
- Community engagement budget is 8%

Q = Question

A = Answer

C = Comment

## **Traci Canfield, Sacramento Regional Transit**

Q: Space for bicycles? Will there be rental bicycles at this transit stop?

A: Jump Bike station, there will be a protected bike lane at the crossing of 12th

Q: Will the Rio Azul have more room for solar? What is the budget for this station?

A: Yes and \$5M

Q: (In relation to sustainability/solar panels) will there be an opportunity for electric vehicle charging?

A: Potentially at the new Twin Rivers development

Q: How many restrooms will there be?

A: Probably 2 stalls

Q: Could there be a “cool down” station (i.e. mist areas)? It gets hot waiting for the Lite Rail

Q: Is there a cost difference between different structure materials (i.e. wood, steel)?

Q: Will there be a budget allocation for providing affordable passes for homeless individuals?

Q: Will there be use of materials to prevent graffiti?

C: There needs to be shaded areas

Q: There is a lack of grocery stores/mini markets; will there be an opportunity for the development of those kinds of businesses?

# TRANSFORMATIVE CLIMATE COMMUNITY (TCC)

## MEETING NOTES (CONT. )

### **Rachel Hazlewood, City of Sacramento**

C: The homeless near N. 12 St bridge/underpass need to be considered with the new project

Q: Will Richards Blvd be receiving a bike lane?

C: Goldie's strip club hinders economic/community growth in that surrounding neighborhood.

Q: Will homes be subsidized for the homeless in the new Twin Rivers development?

### **Susan Veazey, SHRA**

Q: Will there be a parking garage at the new Twin Rivers development? No car ports or covered parking (i.e. from the sun in the hotter months) (Concern was that the new development is trying to minimize the use of cars)

### **Andrea Lepore, The Food Factory**

- The Food Factory has done community engagement charrette's at 3 different locations

Q: Is The Food Factory both wholesale and retail?

A: Yes

Q: Where is it located?

A: 15 and C, across from Blue Diamond factory

### **Other comments**

- Nextdoor.com (Township 9) is a great outlet to interact and communicate with The Cannery residents and the nearby community