

2017 Transformative Climate Communities Grant Application

THURSDAY, AUGUST 31, 2017
PARTNER MEETING



INVESTING IN COMMUNITIES

AGENDA

1. Welcome
2. Transformative Climate Communities Overview
3. 2017 Grant Application
 - Overview
 - Requirements
4. Data Management
5. Q & A
6. Next Steps



TRANSFORMATIVE CLIMATE COMMUNITIES OVERVIEW

OVERVIEW

Program

- In 2010, The Promise Neighborhood Grant program was created by the **U.S. Department of Education** and is modeled after the **Harlem Children's Zone** and the **cradle-to-career continuum**.

Vision

- The vision of the program is that all children and youth growing up in Promise Neighborhoods can **attain an excellent education** and successfully transition to **college and a career**.

TWIN RIVERS AND RIVER DISTRICT NEIGHBORHOODS

A solid blue horizontal bar spanning the width of the slide at the bottom.

OAK PARK MAP



DEMOGRAPHICS

Population: 27,000 residents

Poverty rate: 34%

Third graders reading at grade level: 18%

African American infant mortality rate is 3x higher than white infants

Homeowners: 39%

Median income: \$34,584

THE VISION

THE TCC is to transform and reconnect the 6-block neighborhood where all residents can live, learn, work and be healthy in a sustainable environment.

THE STRATEGIES

To transform the neighborhood for all residents, we propose a place-based strategy centered on a cradle-to-career pipeline to success for all Oak Park children. The Oak Park Promise Neighborhood will focus on the following strategies:

- 1.Education:** Children enter school ready to learn and graduate college-ready.
- 2.Health:** Families get the care they need, when they need it, from a local provider.
- 3.Employment:** Oak Park residents enter the workforce and are hired by local employers.
- 4.Housing:** Oak Park families live in safe homes and are supported to buy them.

2017 GRANT APPLICATION

A solid blue horizontal bar spanning the width of the slide at the bottom.

GRANT OVERVIEW



OVERVIEW

Award:

3 grant awards

Fresno and Los Angeles already awarded

\$4-6 million per year for 5 years

Applicant:

TBD

TBD

Geographic Area:

RESULTS

1. Insert Information

Application and Attachments

We must submit the following:

- **Narrative**
- **Budget Narrative**
- **Appendices:**
 - Appendix A: Applicant Eligibility Checklist;
 - Appendix B: Resumes of Key Personnel;
 - Appendix C: Memorandum of Understanding;
 - Appendix D: Documentation of match **or** waiver request for match, if applicable;
 - Appendix E: Nonprofit status verification, if applicable;
 - Appendix F: Timing of implementation, partner participation, costs and source of funds, #/% of children served per solution, penetration rate and growth plans; and
 - Appendix G: Evidence and Logic Model.

SELECTION CRITERIA

Priority Alignment	Selection Criteria	Max Points
Need	Need for the Project	15
Strategy	Quality of Project Design	30
	Quality of Project Services	20
Capacity	Quality of Management Plan	20
	Adequacy of Resources	15

Competitive Preference Points

Insert

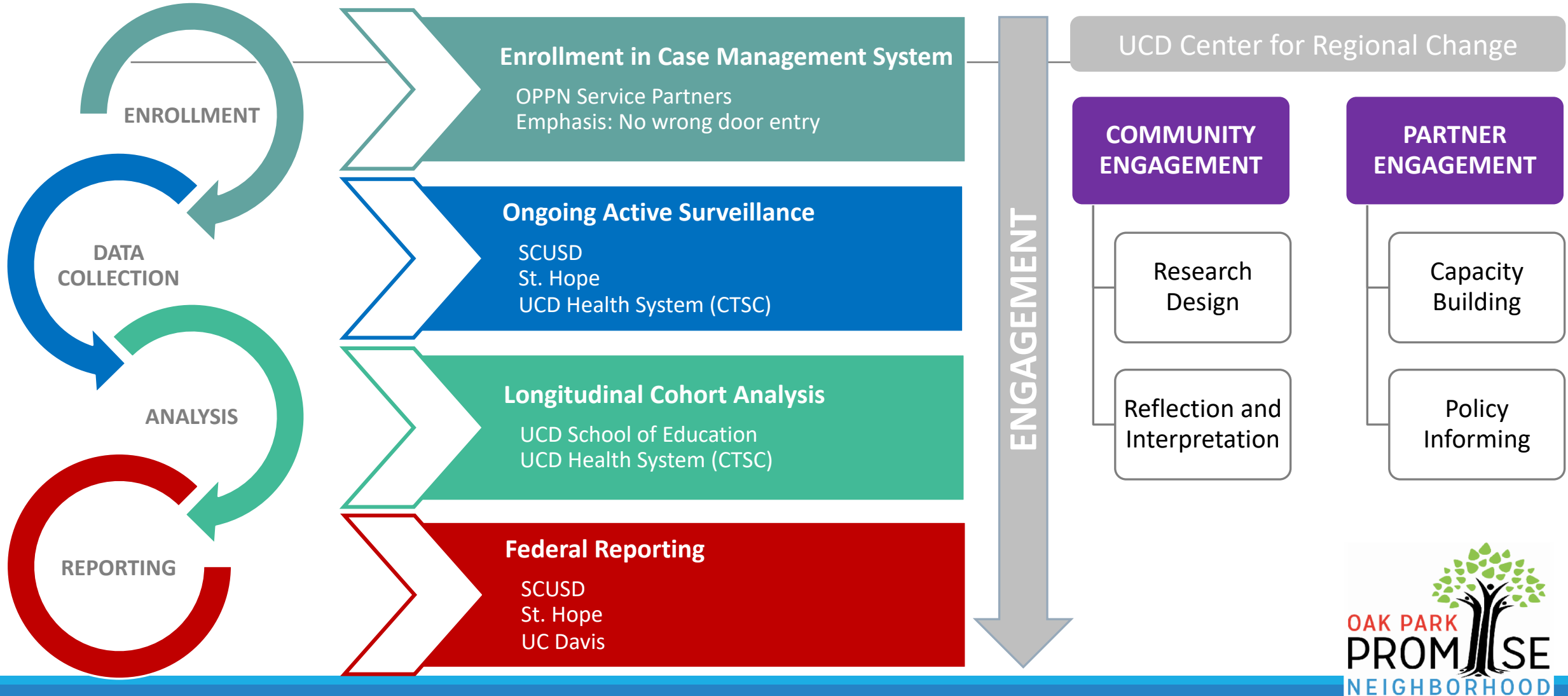
DATA MANAGEMENT

A solid blue horizontal bar spanning the width of the slide at the bottom.

DATA MANAGEMENT

Insert

DATA MANAGEMENT AND EVALUATION



Q & A



NEXT STEPS

A solid blue horizontal bar spanning the width of the slide at the bottom.

TIMELINE

WEEK	COMPLETED WORK
Friday, August 31	Partner Meeting
Monday, September 4	Technical Assistance Questionnaire Due
October 18	Concept Proposal Due
November 30	Deadline for Full Application
January 2018	Announcement of Grant Recipient

APPENDIX



2017 PARTNERS LIST

Greater Sacramento Area Economic Council

Office of Mayor Steinberg

Sacramento Housing & Redevelopment Agency

Sacramento Metro Chamber of Commerce

COMMUNITY OUTREACH



COMMUNITY OUTREACH

TCC Planning Group will develop and distribute information through multiple channels to spread the word about the grant submission. Including:

- Develop informational one-pagers
- Draft key points
- Utilize all key partners' listserv
- Outreach to community leaders and events

2017

Competitive Preference Points:

1. Insert (0 or 3 points)
2. Insert (0 or 3 points)

2017

Competitive Preference Points:

3. Insert (0 or 1 point)
4. Insert (0 or 1 point)

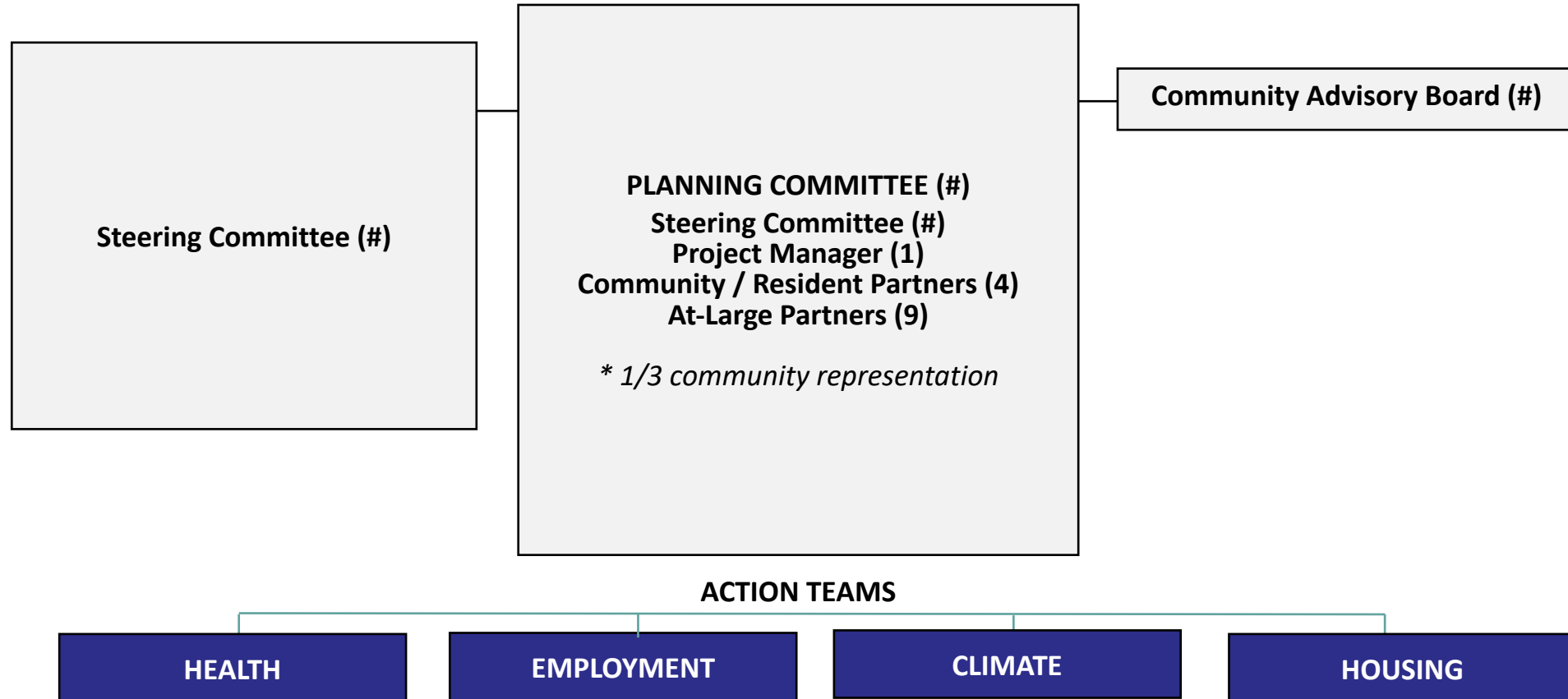
LEAD APPLICANT

TCC LEADERSHIP

A solid blue horizontal bar spanning the width of the slide at the bottom.

TCC LEADERSHIP

Transformative Climate Communities Leadership Structure



COMMUNITY STAKEHOLDERS

TCC LEADERSHIP

ACTION TEAMS

CLIMATE	HEALTH	EMPLOYMENT	HOUSING
Team Lead PE	Team Lead	Team Lead	Team Lead Tyrone Williams, SHRA
Team	Team	Team	Team NeighborWorks SETA SMUD Sacramento Alliance
Key Activities <ul style="list-style-type: none">• Provide early childhood education programming• Provide high-quality PreK-12• Create STEM pipeline to prepare youth for careers• Establish Reservation to College Community Program• Provide medical school admission pathway	Key Activities <ul style="list-style-type: none">• Provide comprehensive inpatient and outpatient healthcare• Create community clinic network• Develop experiential health care learning• Ensure access to food & nutrition• Ensure safe public and rec. spaces and access to social/legal services	Key Activities <ul style="list-style-type: none">• Provide internship and apprenticeships opportunities• Develop job training and career development programs• Connections and preferential hiring to employer-based jobs and careers• Access to 14,000+ jobs at UC Davis and other industries	Key Activities <ul style="list-style-type: none">• Preservation of existing public housing units• Develop mixed income multi-family• Maintain and grow affordable home ownership in Oak Park

WORKING GROUP



WORKING GROUP

Organizations / Individuals able to provide significant staff time:

- Sacramento Housing and Redevelopment Agency
 - Tyrone Williams
 - Geoffrey Ross
- Valley Vision
 - Meg Arnold
- Others?
- Grant Writer

TIMELINE

A solid blue horizontal bar spanning the width of the slide at the bottom.

NEXT STEPS



NEXT STEPS

1. Meeting Schedule

- Steering Committee
- Partner Meeting

2. Data Review

- Data Management
- Data Needs

3. Community Outreach Strategy